

MC9

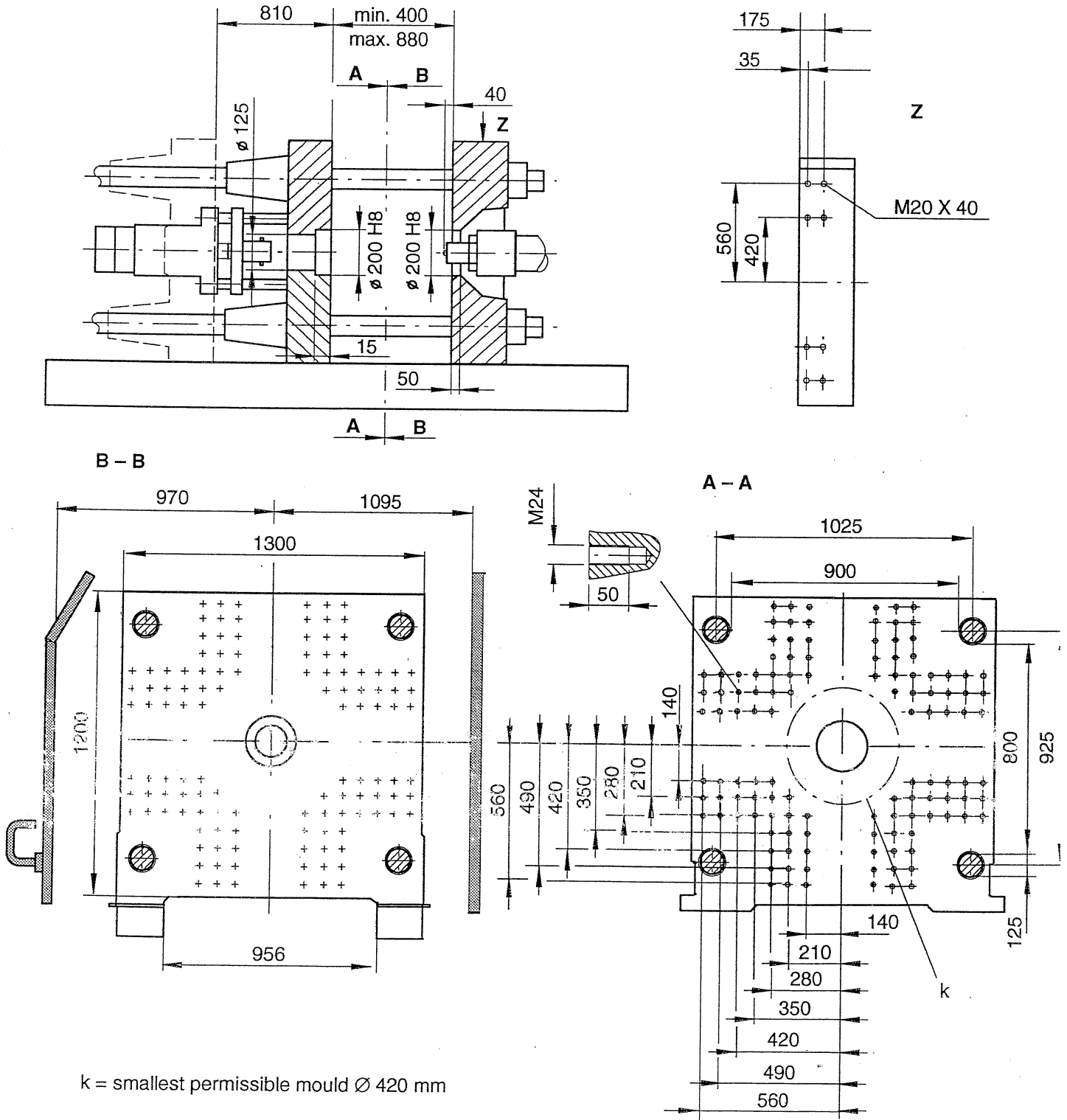
1.1.7 Data Sheet ERGOtech 500 NC4

| | | |
|--------------------------------------|----|--|
| Model description | | ERGOtech 500 – 2300 / 500 – 3300 / 500 – 5200 |
| International size code | | 5000 – 2300 / 5000 – 3300 / 5000 – 5200 |
| Clamping unit | | 5000 |
| Clamping force | kN | 5000 |
| Locking force | kN | 5500 |
| Max. mould opening stroke | mm | 810 |
| Min. mould mounting height | mm | 400 |
| Max. mould mounting height | mm | 880 |
| Max. daylight between platens | mm | 1690 |
| Overall size of platens | mm | 1300 x 1200 |
| Daylight distance between tie bars | mm | 900 x 800 |
| Max. mould weight | kg | 6700 |
| Max. weight content on moving platen | kg | 4400 |
| Hydraulic ejector | | |
| Ejection stroke | mm | 230 |
| Ejection force | kN | 90 |
| Ejection retraction force | kN | 45 |



1.2.7 Mould mounting dimensions ERGOtech 500

1.2.7.1 Mould mounting dimensions ERGOtech 500 : DIN layout



k = smallest permissible mould \varnothing 420 mm