

24. Einrichten Schließseite

24. Setting clamping side

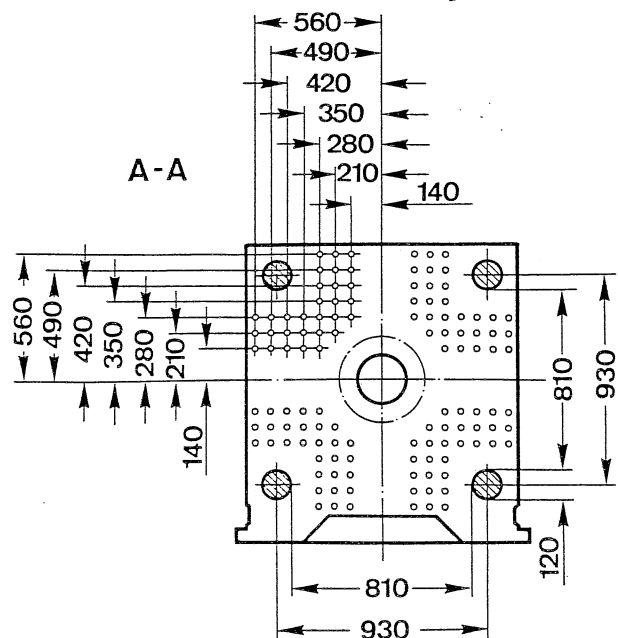
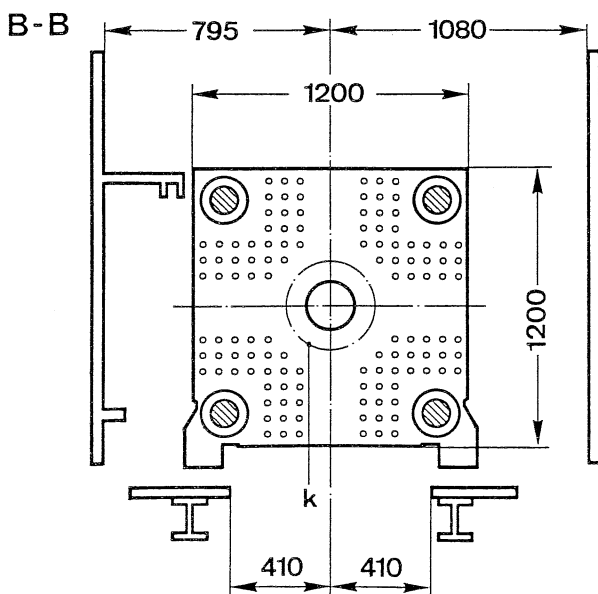
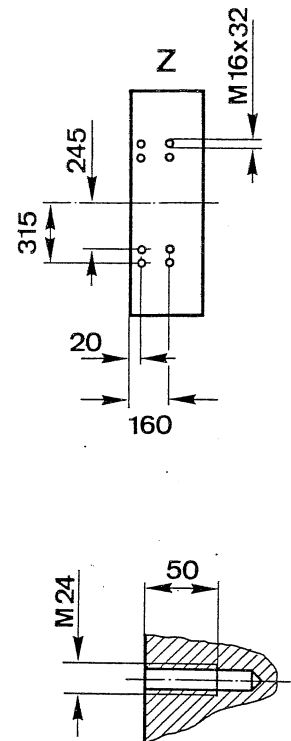
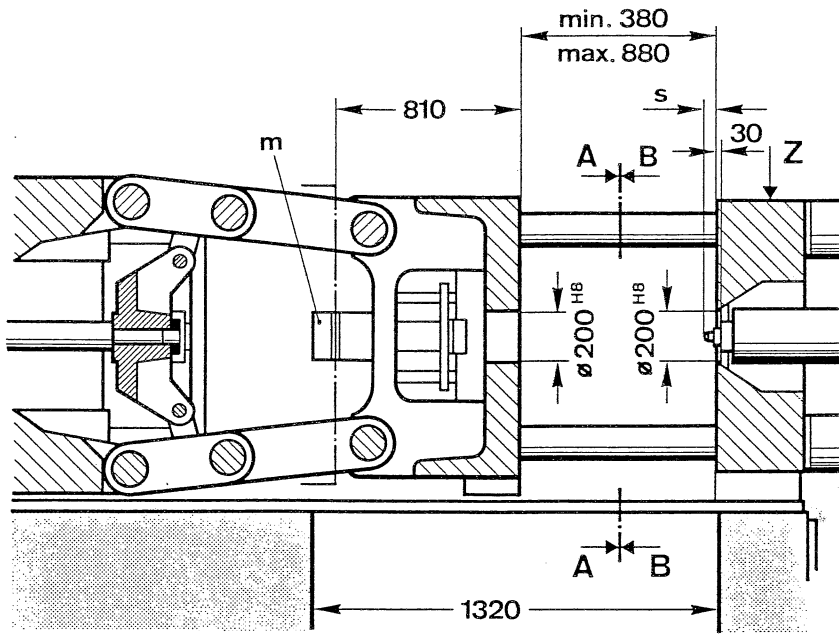
M/c 7 x 8.

24.1 Werkzeugaufspannpläne

24.1 Mould-mounting diagrams

24.1.1 Werkzeugaufspannplan D 500
Ausführung: DIN

24.1.1 Mould-mounting diagram D 500
Version: DIN



k	kleinstes zulässiges Werkzeug Ø 420 mm smallest mould permitted Ø 420 mm	m	Hydraulischer Auswerfer — Anschlußmaße siehe Seite 24.10 Hydraulic ejector — connection dimensions see page 24.10
---	---	---	--