

C KM 500

- 2700
- 3500

Injection Moulding Machine

Clamping Unit

		KM 500 C
Clamping force ¹⁾	kN	5000
Mould opening force	kN	280
Travel force movable platen		
opening	kN	137
closing	kN	116
Size of mould platens (h x v)	mm	1270 x 1200
Clearance between tie bars (h x v)	mm	900 x 800
Mould opening stroke	mm	1170
Mould height min.	mm	480
Max. daylight	mm	1650
Hydraulic ejector - stroke	mm	250
Force forward/backward	kN	95/48

Injection Unit

		SP 2700			SP 3500		
		2700			3500		
Working capacity ²⁾		2700			3500		
Screw diameter	mm	70	80	90	80	90	100
L _s /D ratio		23	20	18	23	20	18
Injection pressure	bar	2389	1829	1445	2205	1742	1411
Stroke volume	cm ³	1097	1433	1813	1543	1953	2411
Shot weight, PS	g	998	1304	1650	1404	1777	2194
Injection rate	cm ³ /s	393	513	649	513	649	801
Screw drive standard/ <i>option</i> ⁶⁾	1/min	218/284			189/277		
from SP 4350 upwards - stage 1/stage 2	1/min						
Plasticising rate at ³⁾ max.							
Screw speed standard or stage 1, PS	g/s	83	108	137	103	130	161
Screw speed <i>option</i> or stage 2, PS	g/s	108	141	179	151	191	235
Nozzle pressure	kN	173			173		

Electric and Hydraulic Equipment

Nominal capacity of pump motor	kW	75	90
Installed heating capacity	kW	36	44
Adjustable barrel heating zones		7	7
Dry cycle number ⁴⁾	1/h		
Oil filling	ltr.	1075	1075

Dimensions and Weights

Net weight including control cabinet	t	25.0	25.8
Installation dimension (l x w x h)	m	7.36 x 2.33 x 2.51	7.65 x 2.33 x 2.55
Max. mould weight	kg	7900	7900

Injection Unit C2

Injection rate	cm ³ /s	473	618	782	513	649	801
Screw speed standard/ <i>option</i>	1/min	218/284			189/277		
Plasticising rate ³⁾ at							
Screw speed standard, PS	g/s	83	108	137	103	130	161
Screw speed <i>option</i> , PS	g/s	108	141	179	151	191	235
Nominal capacity of pump motor	kW	90			90		

Injection Unit C2 with accumulator

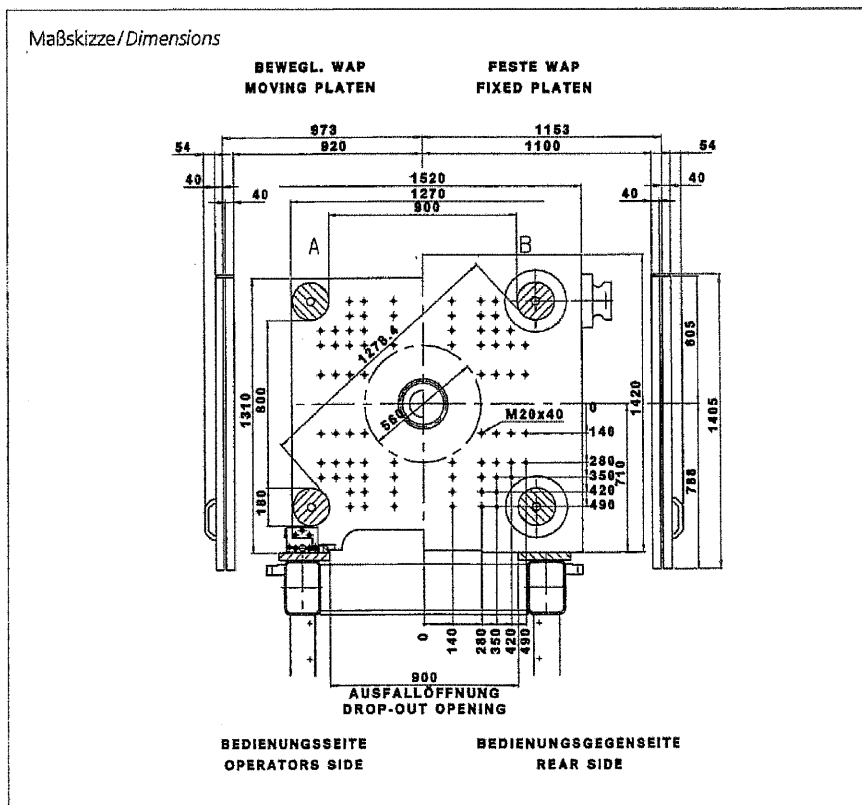
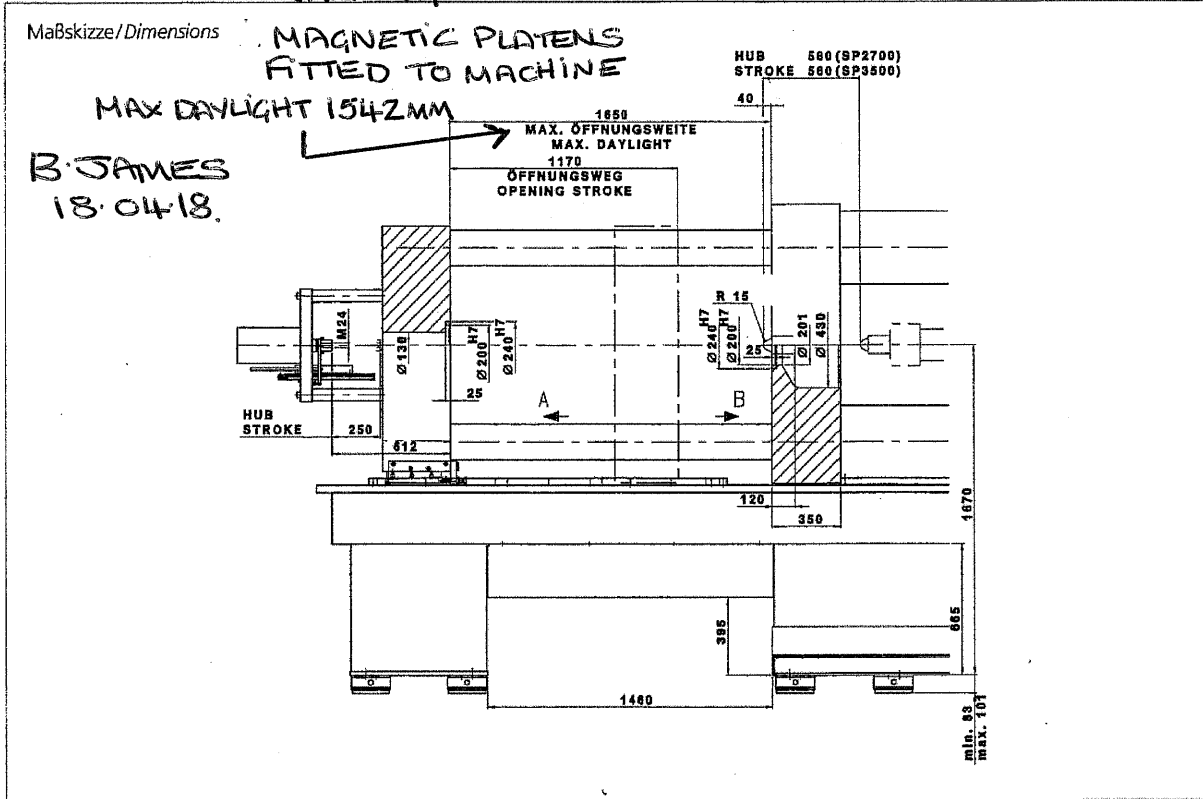
Injection rate, accumulator	cm ³ /s	1155	1508	1909	1508	1909	2356
Screw drive standard/ <i>option</i>	1/min	218/284			189/277		
Plasticising rate ³⁾ at max.							
Screw speed standard, PS	g/s	83	108	137	103	130	161
Screw speed <i>option</i> , PS	g/s	108	141	179	151	191	235
Nominal capacity of pump motor	kW	90			90		

Additional Equipment

Electrical Screw Drive

Screw drive capacity ⁵⁾	kW	70			70		
Screw speed nominal/ <i>maximum</i>	1/min	171/272			119/200		
Plasticising rate ³⁾ at							
Screw speed nominal, PS	g/s	65	85	108	65	82	101
Screw speed <i>maximum</i> , PS	g/s	104	135	171	109	138	170

WARNING.



- 1) $1 \text{ kN} \cong 0,1 \text{ Mp}$
- 2) Internationale Größenbezeichnung errechnet aus max. Hubvolumen (cm^3) x max. Spritzdruck (bar) dividiert durch 1000.
- 3) Ermittelt nach Euromap 5 aus dem Spritzteilgewicht dividiert durch die Plastifizierzeit. Der Plastifizierstrom bezieht sich auf die max. Drehzahl mit KM-Standard-schnecke.
- 4) Nach Euromap 6 (Zyklen pro Stunde).
- 5) Erhöhte Antriebsleistung auf Anfrage.
- 6) Zusätzl. Maschineneinrichtungen

- 1) $1 \text{ kN} \cong 0,1 \text{ Mp}$
- 2) International classification calculated from max. stroke volume cm^3 x max. injection pressure (bar) divided by 1000.
- 3) Determined according to Euromap 5 from weight of injection moulded part divided by plasticising time. The plasticising rate relates to the maximum rpm of a standard screw.
- 4) According to Euromap 6 (cycles per hour).
- 5) Uprated capacity on request.
- 6) Additional equipment